



**THE FUTURE
OF PRECISION
IS PINK**



FO1

Incredible accuracy, highly efficient productivity, virtually climate-neutral manufacturing and the best Grohe Technology service ever.

This is the power to perfect your turned or milled workpieces in every respect.



Turning technology by Grohe

Grohe Technology is there to manufacture and deliver highly complex and elaborate workpieces in the shortest possible time. Incredibly precise and reproducible in every edition. We produce precision turned parts in medium or large series on over 60 state-of-the-art, CNC-controlled lathes.

4 102



Quality in series

A piece of brass becomes a Grohe precision part. Of course, this is done on modern CNC single and multi-spindle machines. And through the technical expertise of Grohe employees. But for a real precision feat, it takes more. Decisively more: Grohe QUALITY.



WORKPIECE FACTS

- Precise shape and position
- Burr-free machining (inside and outside)
- close-toleranced fits
- turned visible surfaces from Ra 0.40
- finely turned visible surface from Ra 0.25
- process-reliable for sealing surfaces from RZ 2 onwards
- Complete "off the shelf" machining
- Interrupted cuts
- Thin-walled geometries
- Complex internal machining
- Milling
- Smallest corner radii

When it gets complicated and time-consuming, we get going. We produce precision parts of the highest quality on our modern CNC-controlled machinery. We can deliver medium or large series as quickly as possible thanks to innovative technology and optimal workflow. Of course, we also produce small runs and sample parts by prior arrangement.



PRODUCTION FACTS

- All common brass alloys
- All common aluminium alloys
- All common stainless steel alloys
- Diameter 6-65 mm
- Quantities from 500
- INDEX multi-spindle (curves & CNC)
- INDEX single spindle (ABC / C100 / C200 / G200/2)
- Benzinger (Shine Turning)

Milling technology by Grohe

Demanding workpieces? Lowest tolerances?
State-of-the-art machinery with coordinated tools in con-
junction with employees who undergo constant training, are
a guarantee for first-class milling results.



FO3



WORKPIECE FACTS

- Precise shape and position
- Burr-free machining (inside and outside)
- close-toleranced fits
- diamond-coated visible surface from Ra 0.05
- process-reliable for sealing surfaces from RZ 2 onwards
- Thin-walled geometries
- Complex internal machining
- Milling
- Smallest corner radii

Grohe Technology produces milled parts exclusively on state-of-the-art 5-axis simultaneous milling centres. This enables unrivalled effective machining in just one operation. Also, because there is simply less time-consuming and error-prone clamping necessary.

You can also benefit from our wide range of materials. There is hardly any material that we cannot procure at lightning speed.

But even the most modern machinery is only as good as the employees who operate it. Constantly trained and highly motivated Grohe Technology employees guarantee a first-class result in every case.

PRODUCTION FACTS

- All common brass alloys
- All common aluminium alloys
- Other materials on request
- Size: 300 x 200 x 200 mm
- Quantities: from 50
- CAM programming
- Hermle C22 + Automation
- Hermle C32
- LT-Ultra (high gloss milling)

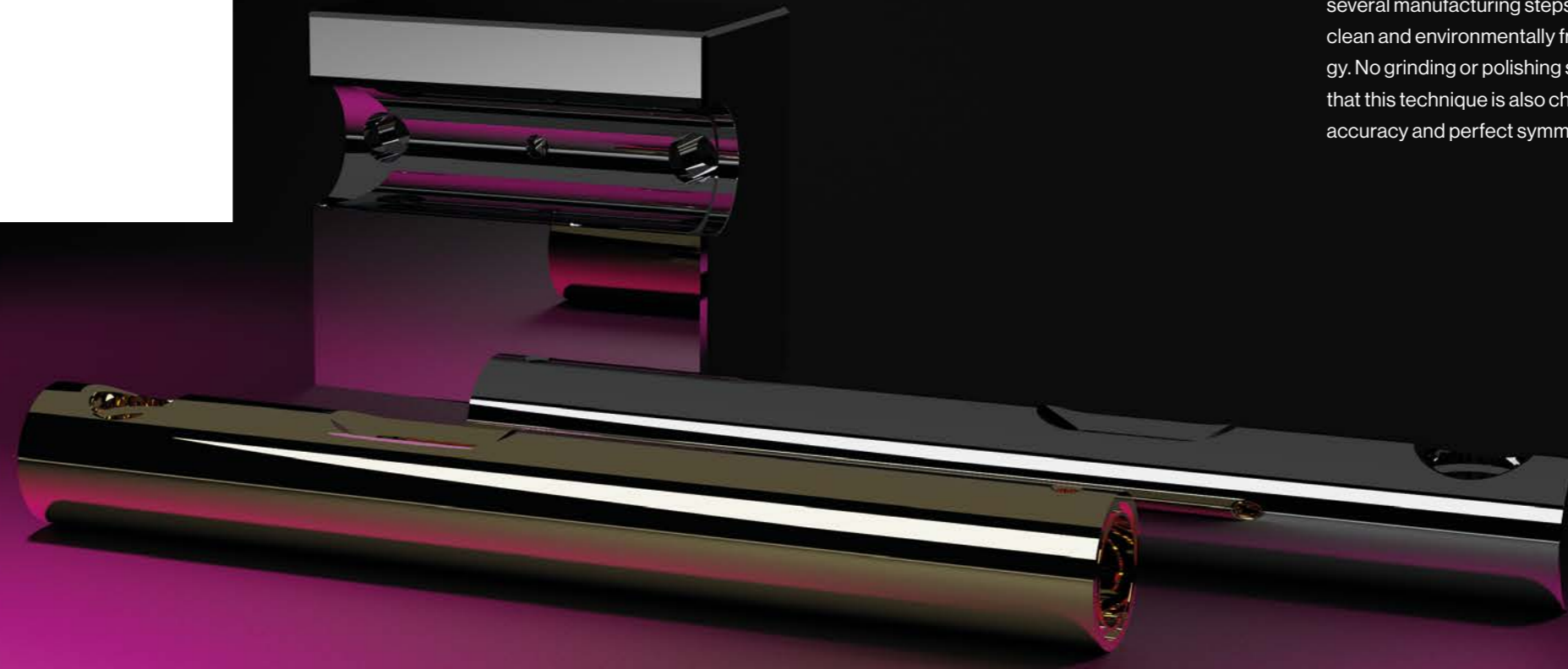
High-gloss technology by Grohe

If the surface of a 5-axis simultaneous machining is not glossy enough, we offer high-gloss milling or high-gloss turning, a technology with which we achieve a degree of gloss and imaging accuracy (RIQ, Reflected Image Quality) previously thought impossible. No wonder this technology is also called "Diamondising".

WORKPIECE FACTS

Gloss-turned visible surfaces
High contour accuracy
Smallest corner radii

Turning or milling components into a high gloss with diamond tools. This requires years of experience. Grohe Technology has more than 10 years in this business. With this expertise, we create high gloss surfaces that would not be possible with conventional milling technologies or even with polishing technology. What's more, high gloss turning and high gloss milling are methods that combine several manufacturing steps, making them an extremely clean and environmentally friendly production technology. No grinding or polishing sludge. It goes without saying that this technique is also characterised by high contour accuracy and perfect symmetries. Brilliant!



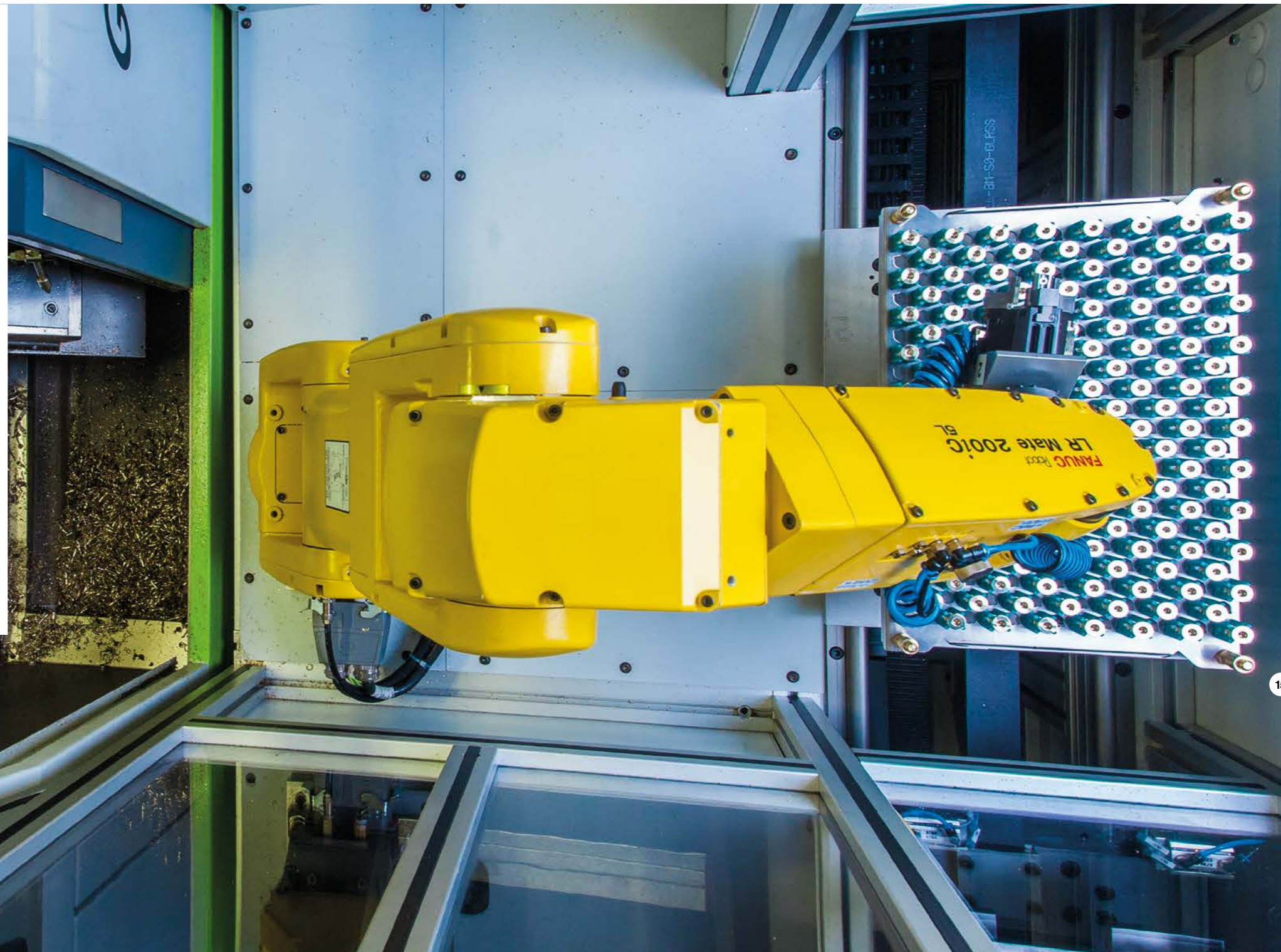
PRODUCTION FACTS

Quantities from 50
All common brass alloys
Benzinger GoFuture Glossy Turning
LT-Ultra MMC900 gloss milling machine

12 104

Precision automatic

Automation equals precision. That's why Grohe Technology focuses on automation. Very specifically, on machines developed for gloss turning. Surface qualities with an Ra value of 0.03μ and the exact adherence to all contours, radii and chamfers are universally clear in their meaning. But automation also guarantees efficient workflows, faster throughput times and, above all, one thing: process safety. In other words: Reliability.



3D Print by Grohe

The future of parts manufacturing has long since begun. In 3D printing. What is still used today as a popular manufacturing process for prototypes and small series is increasingly becoming the method of choice for medium and large series. Grohe Technology is prepared for this and has long since invested in machines and human resources for this technology.



WORKPIECE FACTS

- Highest precision
- 25 µm XY resolution
- 250 mW laser power
- Wash and Cure optimise and automate the rinsing and post-curing of printed parts
- A wide variety of resin-based materials, from rigid to flexible to temperature-resistant
- A wide range of colouring options, from transparent to white to colourful
- More detailed material selection and specification
- Sample production, individual parts up to small series



PRODUCTION FACTS

- Printer: Shape 3
- Technology: Low Force Stereolithography (LFS)TM
- XY resolution: 25 microns
- Laser spot size: 85 microns
- Laser power: A 250-mW laser
- Print volume: 14,5 x 14,5 x 18,5 cm,
5.7 x 5.7 x 7.3 inch
- Layer thickness^b: 25-300 microns,
0.001-0.012 inch

Only when it comes to this are we completely intolerant

For us, quality means meeting the agreed customer requirements for our products. It is the details that separate the wheat from the chaff. You are more likely to find the proverbial needle in a haystack than a faulty Grohe Technology precision part.



QUALITY FACTS

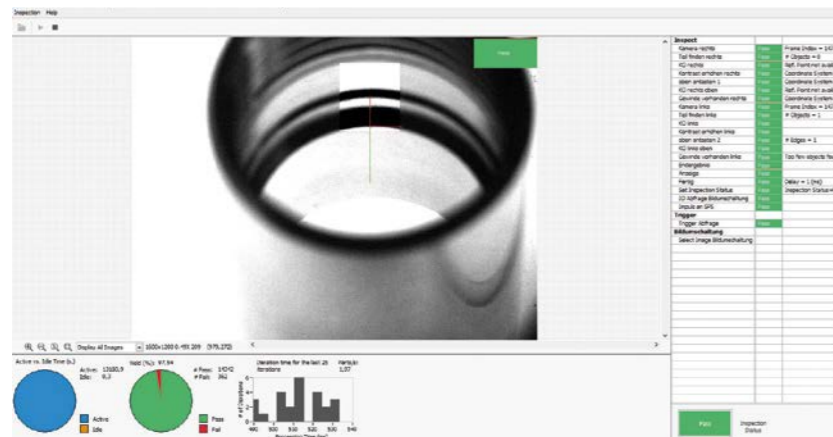
- 3D coordinate measuring machine ZEISS DuraMax
- 3D coordinate measuring machine OGP SmartScope
- 3D coordinate measuring machine O-Inspect 543
- Fully digital test stations in production
- Large selection of test or measuring equipment
- ZEISS roughness testers
 - Surfcom Flex 50
 - Surfcom Touch 50

In order to ensure smooth production processes at all times, we rely on proven and reliable suppliers (tools, semi-finished products, electroplating, etc.). Regular certification to ISO 9001:2015 and ISO 14001:2015 certifies that we live and thoroughly master our processes. Through excellent working conditions, we achieve the highest level of satisfaction and motivation among our employees.

This is how we coined the term "Grohe Quality". A synonym for the highest quality standards and quality loyalty. Whether turning or milling. Less waste, less energy, fewer raw materials.

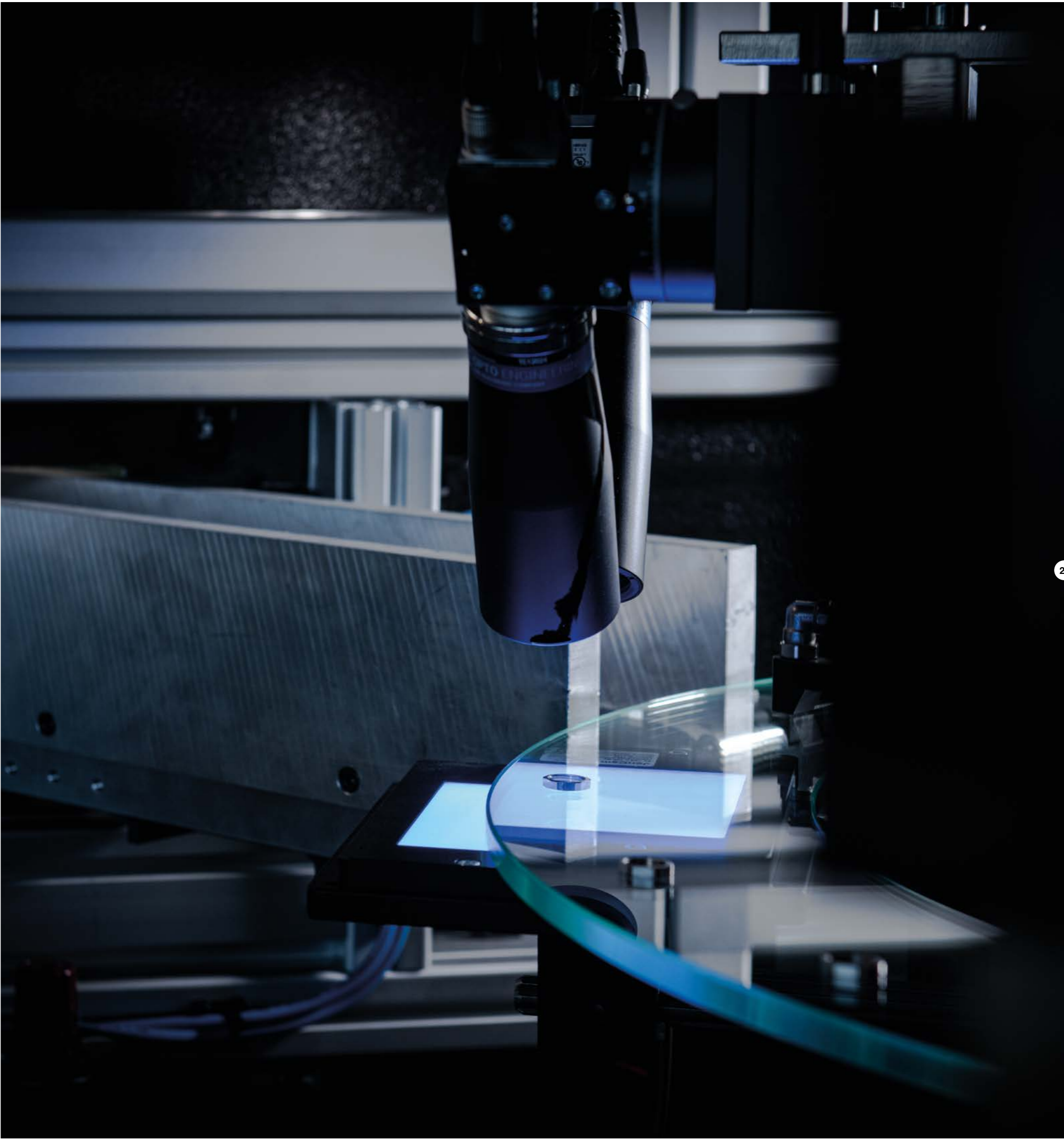
Only the best will do

For a 0% error tolerance, 100% reliable inspection is needed. And of every single part. A state-of-the-art optical digital inspection system checks every single part with 4 telecentric optics and thus guarantees that only completely accurate precision parts leave our factory. And you can rely on that in turn.



QUALITY FACTS

- 100% control
- Part size up to 30 x 35 mm
- Small, medium & large series
- Inspection system SDC





20.000 m² of skill

One of the most modern companies in the Northern Black Forest region produces more than 140,000 high-precision turned and milled parts every day. With 100 highly trained employees who fully identify with Grohe Technology.

greenG. Our promise to the environment

Thinking ahead. Rethinking relentlessly. Thinking ecologically. This, too, is what sets Grohe Technology apart. As a company on the road to climate neutrality.

With our 750 kWp plant, energy efficiency and environmental awareness are naturally at the forefront at Grohe Technology. This applies to production, just as much as to the factory buildings. Grohe Technology generates energy through heat recovery and photovoltaics, while LED lighting and an energy-efficient, intelligent day-light control system create the lighting required. Only low-temperature systems are used for heating energy input. Exhaust air is filtered and returned to the room with a small amount of fresh air via a heat exchanger as pre-heated fresh air. These and many other measures make Grohe Technology an exemplary company in terms of sustainability. And new: a ground-mounted system with more than 750 kWp. For a climate-neutral future for everyone to enjoy.

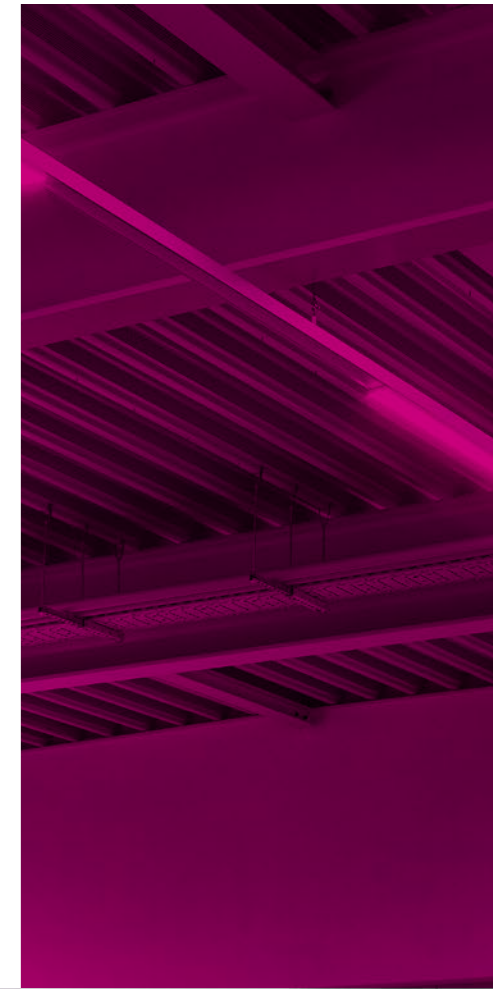
greenG FACTS

- PV system
- Compressor system with heat recovery
- E-charging point
- E-bike leasing
- Chip processing with oil recovery
- Continuous oil treatment
- LED lighting
- Intelligent building management

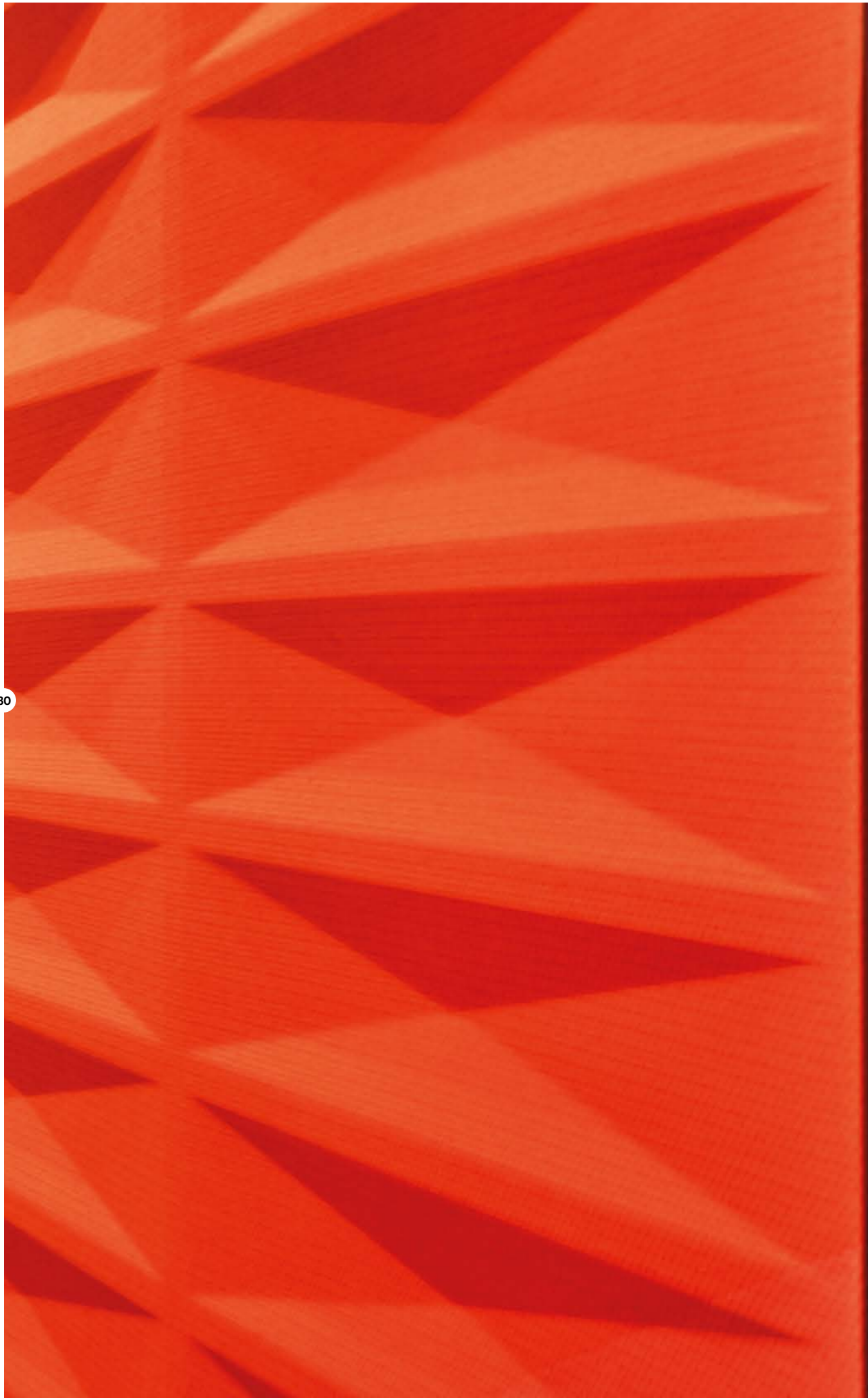


Our concept for success: Close to home and cosmopolitan

At Grohe Technology, the future of work has long since begun. With communication centres for cross-divisional and cross-competence cooperation. New Work is the magic formula. Flat hierarchies, equitable cooperation and flexible workplaces. We are convinced that great achievements are made where people feel at home.







High time we got to know each other



Grohe Technology.

I stand behind every single part
with my name.

Oliver Grohe,
Managing Director Grohe Technology



Grohe Technology.

Our figures reflect the quality
of our company

Wilhelm Schulz,
Commercial Manager/Authorised Signatory
Grohe Technology



Grohe Technology.

The secret behind the precision of our
turned and milled parts?
Our workflow.

Bernhard Neef,
Operations Manager Grohe Technology



Grohe Technology.

Guaranteed independence through our
own engineering services.

Daniel Hettich,
Production Manager Grohe Technology



Service. Guaranteed
exactly when you need it

When a Grohe precision part makes its way to the customer, it has not only undergone a perfect manufacturing process. It also has the guarantee that it will be treated with the utmost care and precision afterwards. This is ensured by customised packaging and the years of experience gained with our own fleet of vehicles. One that always leaves the company gate when you need it. Not a minute earlier and not a minute later. Just in time.

Erfolg kommt nicht über Nacht

Über 50 Jahre Erfahrung in der Bearbeitung von Metallen. Das sind über 50 Jahre kontinuierliches Lernen und Weiterentwickeln. Das ist es, was uns weiterbringt und jeden Tag verbessert.



36

37

Johannes Thomas Grohe, son of Hans Grohe, founds the Automaten-dreherei Johannes Thomas Grohe in Alpirsbach Klostermühle for the contract manufacturing of brass turned parts for the Hans Grohe company.

Everything is up in flames. Even twice. Machinery and premises are completely destroyed.

Move into the new production hall in Betzweiler with 1,500 m² of production space.

Certification according to DIN ISO 9001.

New construction of an office, training and social building with approx. 800 sqm.

Grohe Technology AG celebrates its 50th anniversary with 60 employees producing 29 million parts a year in 3-shift operation.

Grohe Technology AG processes further materials and expands its product portfolio to include the "milling" division.

Grohe Technology employs 100 people, processes around 3,500 tonnes of metal a year and produces 37 million turned and milled parts.

1966

1987/1989

1992

1996

2011

2016

2019

2021

1986

1990

1994

2007

2010

2012

2018

2020

2022

Changeover from contract manufacturing to made-to-order production.

In January 1990, Oliver Grohe takes over the company.

First CNC lathe. The move into CNC turning technology begins.

Conversion of Grohe Präzision into a public limited company (in German: AG). Board of Directors appoints Oliver Grohe.

Extension by 1200 sqm of a new production and storage hall.

Completion of the new chip disposal system for new non-ferrous metals.

Grohe Präzision AG becomes Grohe Technology AG. The production and storage areas are increased to 5,500 m².

Grohe Technology AG expands its production and administration areas to a total of 20,000 m².

Commissioning of the PV system 750.0 kWp, own consumption share 80.0%.
Grohe Technology AG becomes Grohe Technology GmbH.

New ground-mounted PV system with 750,000 kWh. Commissioning of a new inspection system. Expansion of the machine park

THE FUTURE OF PRECISION IS PINK



38



39



Grohe Technology
Allmandstrasse 9
72290 Lossburg-Betzweiler

Phone +49 74 55 - 93 80 20
Fax +49 74 55 - 93 80 219

info@grohe-technology.de
www.grohe-technology.de